

pulled into the station in 1971. "That whole concourse out there, the waiting room as it was called ... it has been vacant for years and years and years," said Frederick Bland, a partner at New York-based architecture and planning firm Beyer Blinder Belle.

"But it's all there, it's all right there. It's just kind of mothballed."

The mothballed portions

will be a much smaller number. But it still will be a destination. It will create the beginning of a new vibrancy in the area."

Bland has more than a passing interest in Union Depot. He was in town recently as part of a Mortenson Construction-led project team that's taking steps toward restoring the historic structure and returning the building to its transit roots.

ed BBB to get on board with the Union Depot effort. The firms hadn't worked together, but by rep... It BBB points selecting of Cour thori quires

beaten railroad deck along the river and prepare it for use as a transit hub. Crews

scope. The assessment will a few months said. biggest concourse in deck, which a beating over years. And right between 3 and

Monday, January 25, 2010 3A

# Business & Professional Restoratic

## MnDOT recognizes Mathiowetz Construction as 'Prime Contractor of 2009'

**SLEEPY EYE** — The Mathiowetz Construction Company, Inc. located in Sleepy Eye, has been recognized by the Minnesota Department of Transportation Department of Civil Rights as the "Prime Contractor of the Year" for 2009. By conveying this award, MnDOT recognizes Mathiowetz Construction's efforts and contributions in support of the Disadvantaged Business Enterprise (DBE) program in Minnesota Highway Construction.

The MnDOT DBE program ensures that small businesses owned by socially and economically disadvantaged individuals have equal opportunity to participate on contracts and project work offered by MnDOT. Mathiowetz Construction appreciates the relationships this program builds and is honored to be recognized as Prime Contractor of the Year, press release stated.

Mathiowetz Construction Company has been building roads and private site work for 85 years and has successfully provided construction services in both traditional bid-build and design-build delivery methods. Their success is a result of the extensive efforts that the company expends to have the most highly trained operators in the excavating business and supervisors with excellent planning and leadership skills.

"Our people are our strength" said President, Brian J. Mathiowetz.

Mathiowetz Construction also stays on the cutting edge through application of innovative technologies such as GPS and machine control.

Mathiowetz Construction's staff includes personnel trained in hazardous material handling, crane services, GPS technologies, and field applications, soil and gradation certifications, demolition operators, traffic control supervisors, NPDES erosion control site supervision and instructors with Ridgewater College heavy equipment operator training program.

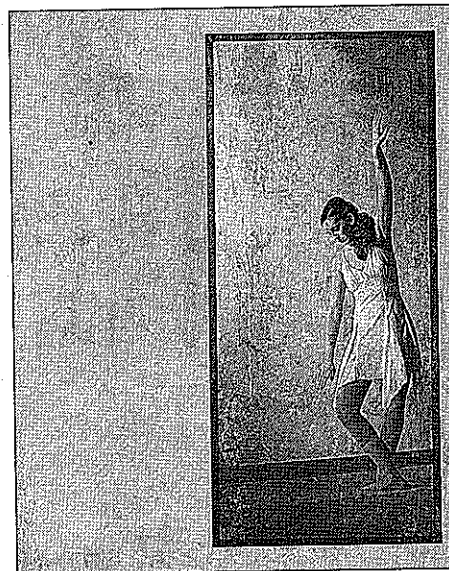
## Stone Harbor Wilderness Supply to open in Grand Marais

**GRAND MARAIS** — Stone Harbor Wilderness Supply has announced plans to open a store in spring of 2010 in Grand Marais. The store will offer high-quality canoes, kayaks, camping and paddling gear, as well as guided tours and partial outfitting. In the winter, the store will offer gear for cross country skiing, snowshoeing, and other Nordic sports.

"We're very excited to bring this store to Grand Marais, and can't wait to open this spring," says Stone Harbor president/owner Jack Stone, who is a 1966 graduate of Cathedral High in New Ulm.

Stone Harbor will be staffed by employees who live in and love the North Shore. The store's General Manager, Bryan Hansel, is a local photographer and guide who has extensive wilderness experience, and retail experience from

'Serenity' by Angela Archer of Arlington  
Submitted photo



## Photographer Angela Archer receives first merit

The 2010 Professional Photographers Association's National Convention was recently held in Nashville, Tenn., with more than 10,000 photographers from across the nation in attendance.

Photographer Angela Archer of Arlington received her first merit towards her master of photography degree. Her portrait of Makenzie Petzel entitled "Serenity" was on display throughout the convention at the Gaylord Opryland Convention and Resort Center.

## Gilman joins Wellness Center of Broadway Chiropractic as massage therapist

**NEW ULM** — Broadway Chiropractic has added massage therapist Jen Gilman CMT, to join Ken Griebel CMT, to its Wellness Center.

Gilman was born and raised in New Ulm. She graduated from Sister Rosalind School of Massage in 2006. She previously worked at Penazz, before joining Broadway Chiropractic Wellness Center. Gilman and her husband James have two sons, Cody and Joey.

Gilman specializes in Swedish massage, deep tissue, hot stone massage and pregnancy massage.



Jen Gilman

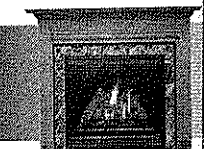
**IN JIAN HOUSE**  
ina Buffet

All You Can Eat

Star Buffet Car  
MON. - SUN. EVE  
Shrimp, Fish  
Crab Legs, Bu

400 North Minnesota  
Downtown New U  
**354-1211**  
\*Regular Priced Adult Buffet  
Not valid with any other co

HEAT & GLO



GLOWING H & HOME

Kin water syst

Have Ha Water... Let Kineti Help!

MAGIC WATER  
Your local independence  
1512 North Broadway  
507-354-7193

